

# **ELECTORAL REVIEW OF CHORLEY COUNCIL COMMITTEE**

TUESDAY, 13TH NOVEMBER 2018, 6.45 PM  
COMMITTEE ROOM 1

I am now able to enclose, for consideration at the above meeting of the Electoral Review of Chorley Council Committee, the following maps that were unavailable when the agenda was published.

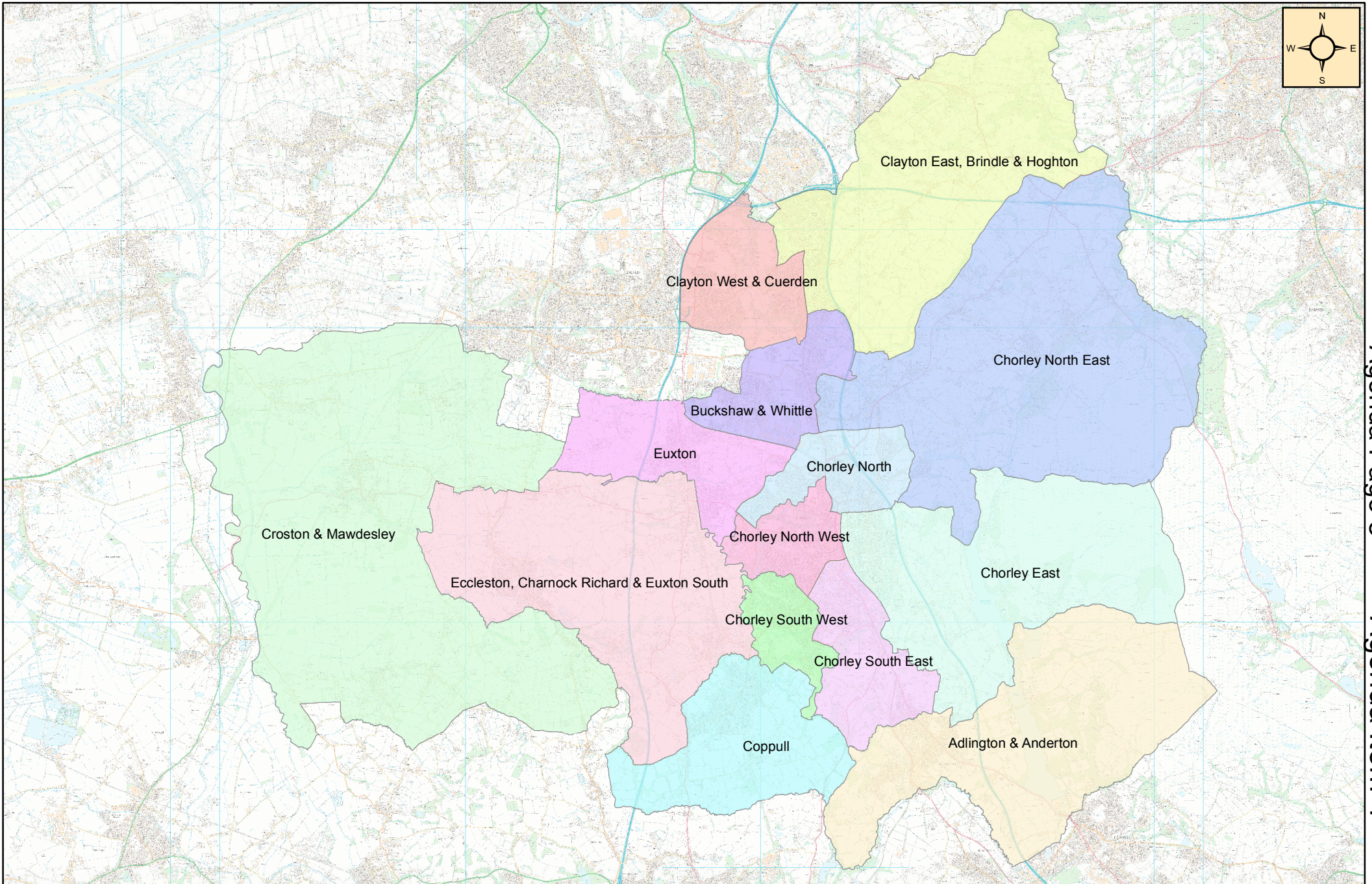
<b>Agenda No</b>	<b>Item</b>	
4	<b>LGBCE - DRAFT RECOMMENDATIONS ON WARDING ARRANGEMENTS</b>	(Pages 3 - 6)
	The first map displays the boundaries of the LGBCE's draft recommendations. The second map is the LGBCE's draft recommendations overlaid with Chorley Council's proposal.	

GARY HALL  
CHIEF EXECUTIVE

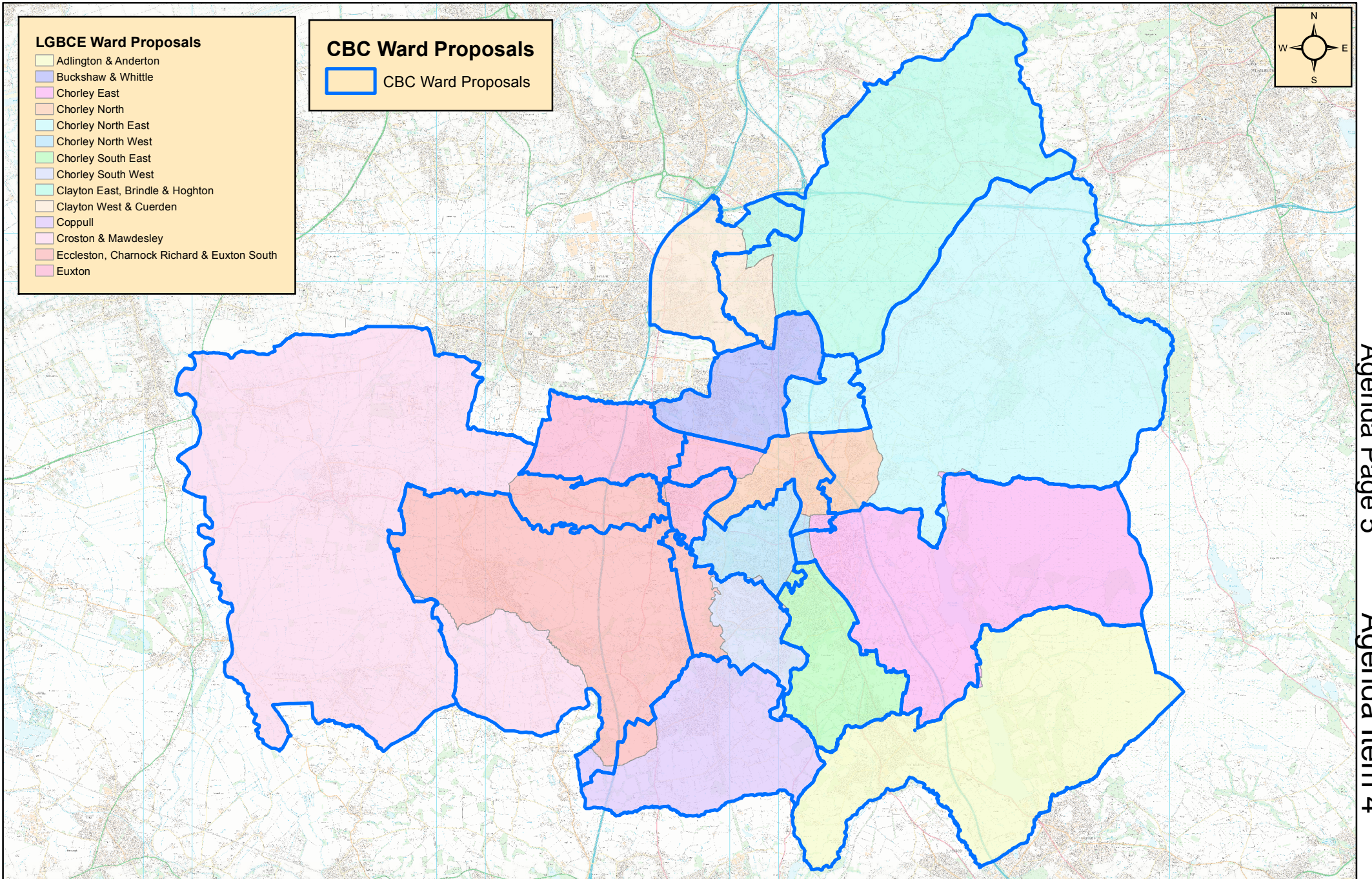
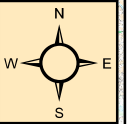
Electronic agendas sent to Members of the Electoral Review of Chorley Council Committee

If you need this information in a different format, such as larger print or translation, please get in touch on 515151 or [chorley.gov.uk](http://chorley.gov.uk)

This page is intentionally left blank



This page is intentionally left blank



This page is intentionally left blank